



Society of Mountain Artists Inc.

NEWSLETTER

ISSUE: NO 392

May 2026

Mail P.O Box 76 Wentworth
Falls 2782

Email

secretary@mountainartists.org

Website/gallery:

www.mountainartists.org

Meetings: Wentworth Falls
School of Arts,
Great Western Highway,
Wentworth Falls 1pm

President: Anne Atwood 0402156142 anne@theatwoods.net	Geoff Tonge: 0450 624393	Patron: Robyn Collier
Vice President: Lida Szabunia 0493227187	Gordon Wright: 0497469197	Public Officer: John Marsh
Treasurer: John Marsh 0412652201 margandjohn@internode.on.net	Demonstrations/Workshops: Sheree Wilson: 0418860535	Webmaster: Di Clark 0414841818
Secretary:	Facebook: Di Clark: 0414841818	Librarian: Carole Arratoon 0410587529

PRESIDENT'S REPORT – May 2026

Winter is certainly on its way. I have enjoyed the amazing autumn colours. I think it's been one of the best years for a long time.

With the cooler mornings often comes the mist in the valley. How fortunate we are to live in the Blue Mountains and what an inspiration it is for our drawings and paintings.

I have been recently reading a biography of William T Cooper, who had a wonderful eye for nature in particular birds. Cooper was a prolific artist, particularly of birds and a friend of William Dobell. Dobell's advice to him was to draw, draw and draw. "Not until you draw can you paint," he advised Cooper. I leave the question with you, 'Does this still hold true for today?'

Next week, Jennie Deane will be our demonstrator. We look forward to her painting in watercolors. Don't forget to contribute to the Mini Exhibition. Please bring along your painting of an animal, pet or bird - so much variety.

Last week, Liz Connor's Thanksgiving service was held in Leura Memorial Chapel. What an interesting life Liz led. We shall miss her contributions to our yearly exhibition at Fairways.

We recently received a letter from a previous member of the SMA, Ron Anderson, who has now left the area. He wishes to be remembered to all the people he knew well.

"I would just like to add that I have the fondest memories of my time with the Society of Mountain Artist and the many, many wonderful folk that I had the privilege of meeting and working with in different capacities.

It looks like the society is continuing its strong contribution to the arts in the blue Mountains and is building upon the long history. It has as a dynamic Society that continues to evolve and provide support to the blue Mountains art community.

My very best wishes to all. "

As winter arrives, remember to keep warm and safe.

And keep drawing and painting

Regards,

Anne.

Paul Cezanne:

"A work of art that isn't based on feeling isn't art at all."

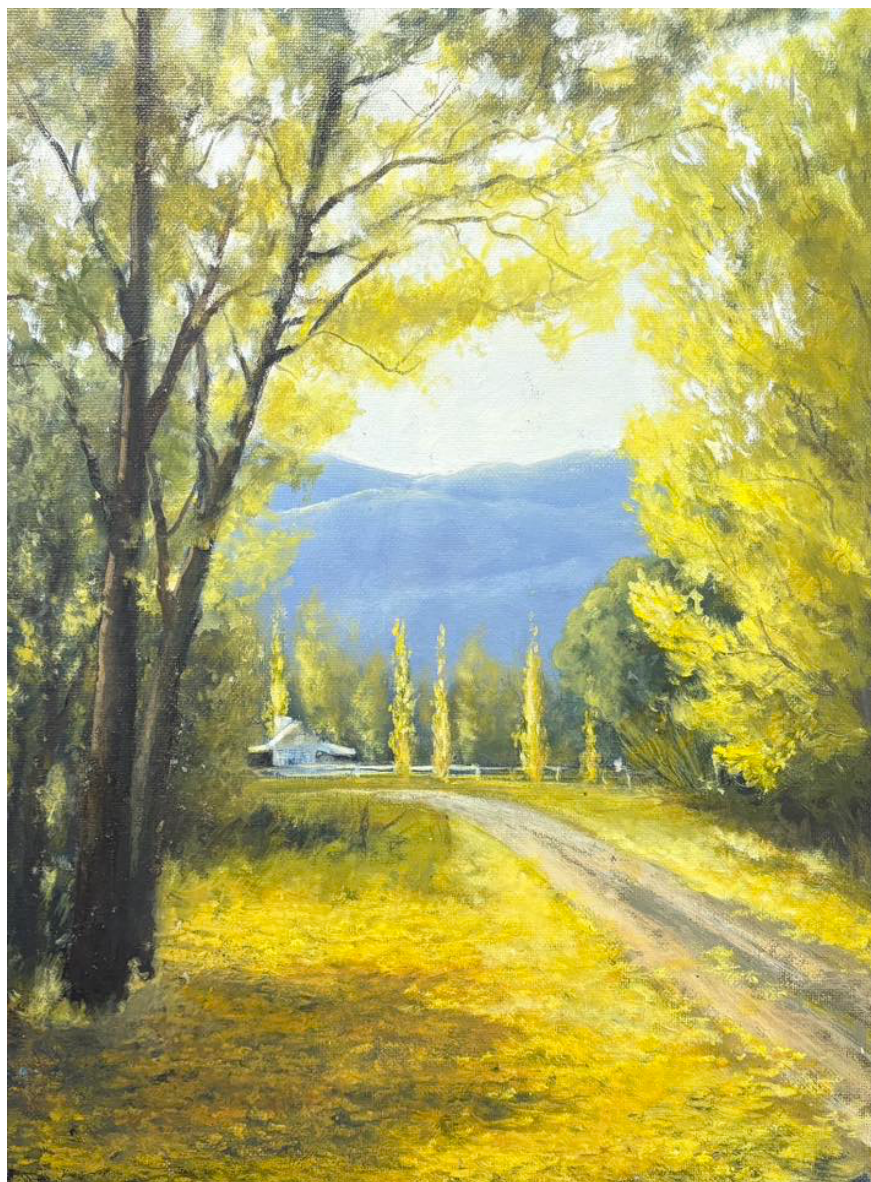
MONTHLY MEMBERS EXHIBITIONS

First Prize is a \$25 voucher, redeemable at The Artists' Store, and a Highly Commended Award.

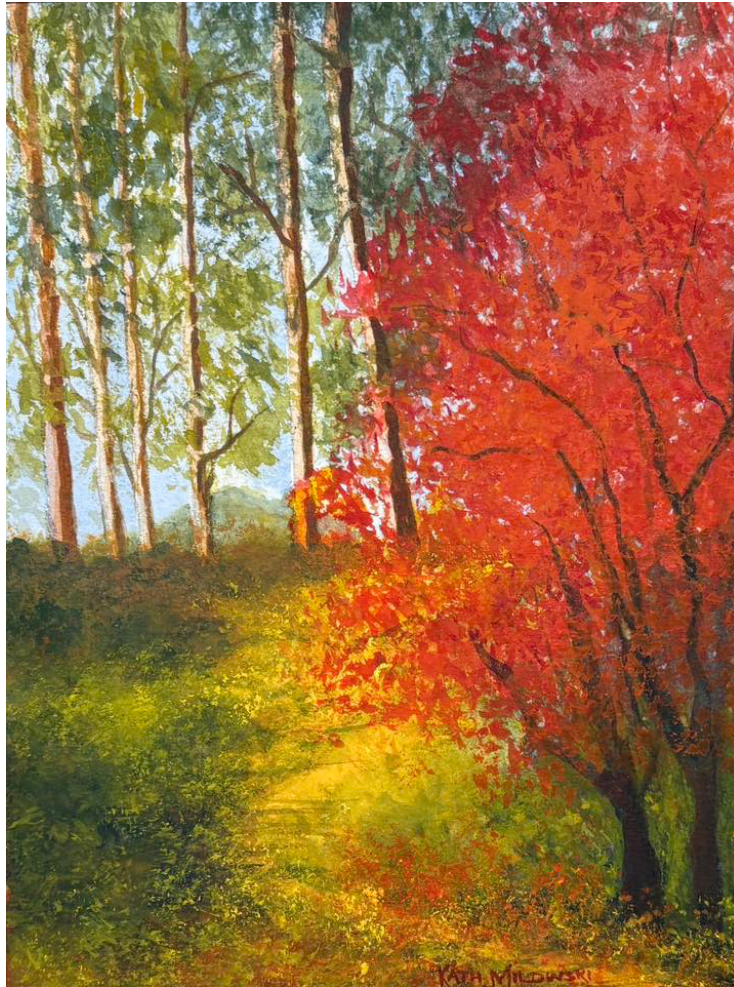
Entries can be any style or medium, old, or new work

April Winners:

Theme: Autumn



First Prize: Lewis Johanesen



Highly Commended: Kath Milowski

Mini Exhibition May

“Farm Animal, pets and Birds”

Demonstration: Jennie Deane

Watercolour



Bi-MONTHLY RAFFLE PRIZE for 2026

**Help raise funds for the Spring Exhibition. \$2 a ticket or \$5 for 3.
\$50 Voucher to be won in February, April, June, August and October**

MEMBERSHIP RENEWAL

Reminder to Members: If your membership has lapsed, please consider renewing it. The SMA relies on member's fees to support all activities.

SPECIAL EVENTS

Katoomba Cultural Centre Current Exhibitions

<https://bluemountainsculturalcentre.com.au/exhibition/confluence/>

Collector's Edition

23 May – 7 Jun

Collectors' Edition is the Cultural Centre's annual fundraising exhibition and is an opportunity to start your own art collection while supporting the Blue Mountains Cultural Centre's Collection Acquisition Fund.

There will be an array of original A5 artworks to choose from, with silent bidding taking place online via Galabid. Each artwork will have a QR code that takes you to the bidding page and Cultural Centre staff will be ready to assist.

*A Blue Mountains Cultural Centre Fundraising Event
Collectors' Edition #12 is supported by Hope Tree Framing*

Phil Went Workshop

Long Pose Portrait

Phone Number

0400609368

SMA Members have a discount

<https://www.philwent.com.au/workshops/>

**Management Committee meeting: First Monday of each month.
Next meeting 2nd April, 1pm. All SMA members are welcome to attend.**

ACTIVITIES CALENDAR 2026

Date	Time	Event	Location
MAY 2026			
4th May 1st Monday of the Month	1.00 p.m. – 2.00 p.m.	Management Committee Meeting	RSL Club Lurline St Katoomba. SMA Member’s welcome
7th May 1st Thursday of the Month	10.00am – 1.00 p.m.	Paint Together	School of Arts Great Western Highway Wentworth Falls \$5
21st May 3rd Thursday of the Month	1:00 p.m. – 3.00 p.m.	Demonstration Jennie Deane Watercolour Urban Landscape Mini Exhibition Farm animals, pets and birds	School of Arts Great Western Highway Wentworth Falls \$5
23rd May 4th Saturday of the Month	10.00 a.m. – 1.00 p.m.	Paint Together	School of Arts Great Western Highway Wentworth Falls \$5
JUNE 2026			
1st June 1st Monday of the Month	1.00 p.m. – 2.00 p.m.	Management Committee Meeting	RSL Club, Lurline St Katoomba. SMA Member’s welcome
4th June 1st Thursday of the Month	10.00am – 1.00 p.m.	Paint Together	School of Arts Great Western Highway Wentworth Falls \$5
18th June 3rd Thursday of the Month	1:00 p.m. – 3.00 p.m.	Demonstration Phil Went Oils Still Life Mini Exhibition Your Favourite Hobby Realistic or Abstract	School of Arts Great Western Highway Wentworth Falls \$5

