



Society of Mountain Artists inc.

Featuring the Works of Artists from the Blue Mountains in New South Wales, Australia

Apr 2018

Newsletter

Issue No. 326

**Mail P.O. Box 76 Wentworth Falls 2782—Email secretary@mountainartists.org
Monthly Meetings at Wentworth Falls School of Arts Great Western Hwy Wentworth Falls
Website / Gallery www.mountainartists.org**

Management Committee

President	Peter Ayres	4758 9005	Committee Member	Anna Marshall	
Vice-President	Lia Johnston	4782 4408	Committee Member	Marie Morris	
Secretary	Pat Carruthers	4758 7172	Committee Member	Coral Jones	
Treasurer	Ron Anderson	4757 2423	Committee Member	Esther Mcfarlane	
			Committee Member	Fred Blakers	4751 6359

Patron: John Wilson FRAS

Membership / Web John Finnerty 4757 4324
Records johnfinnerty@gmail.com

Editor: Alfred (Fred) Blakers 4751 6359 alfie-b@bigpond.com
Articles required by 2nd Monday of month

President's Message

Congratulations to everyone who submitted an entry to the Fabulous Fake members choice at our March AGM meeting. Won by Marie Morris but they probably all deserved an award.

Thanks to everyone who has served on an SMA committee/sub committee for your endeavours and welcome [or commiserations?] to our new volunteers for these committees and other roles

Sincere thanks to David Dodd who I omitted to thank for auditing our 2017 accounts and acting as returning officer for the AGM.

The new management cmttee [see newsletter for details] met for the first time on the 9 April with a full agenda. Fred Blakers was reappointed public officer, A role required by the NSW Office of Fair Trading, He will also kindly continue as editor of the newsletter.

It was also decided that an art material voucher will be the prize for the monthly viewers' choice .[April's subject is 'Still Life'] The exhibition committee advised that these paintings will also be eligible for the Spring Exhibition. The committee also advised that \$315 has already been raised by sale of raffle tickets which bodes well for the Autumn show in Leura.. Please note that thanks to Phil Budge we will be able to set up the screens etc on Sunday afternoon ready for the entries on Monday morning.

After much debate we have also decided that we will investigate a painting holiday at Kiama towards the end of October. Keep an eye on the newsletter for an update on accommodation etc.

Our social volunteers [Irene Miller, Mave Roberts, Jennie Ross Brown and Lia Johnston] have already been busy with lots of ideas on excursions so keep an eye on the newsletter diary. Dennis West has also managed to book St Andrews church hall for Saturday workshops on 7 July,8 Sept and 24 November- topics to be finalised **-ideas?**

Hope you have paintings entered for the exhibition or getting ready for the Spring one ?

Peter Ayres

New management committee

Peter Ayres President * Lia Johnston Vice-president * Pat Carruthers Secretary * Ron Anderson Treasurer.
Committee Members Marie Morris, Anna Marshall, Coral Jones, Esther MCFarlane, Fred Blakers.

Sub Committees must be appointed by Management Committee. Previously this was done at the first Management Meeting after the AGM. This can hinder the smooth running of organised activities while waiting for any changes to appointments.. Management decided that in future Sub-committee will be appointed April to April. To help with smooth planning .

Exhibition Sub-committee

Lia Johnston, Heather Skarratt, Marie Morris, Maunie Kwok, Jenny Ross-Brown, Rhys Jones .

Web Sub-committee

John Finnerty, Fred blakers, Maryanne Bell

Publicity Geoff Tonge

Newsletter, Public Officer Fred Blakers

Library Maunie Kwok

Membership . John Finnerty

Meeting Teas. Dixie Willmott, Mara Jordan.

Addition Members / Helpers may be co-opted as required

IN THE PIPELINE

The manage Committee and sub- committees are busy planning the rest of the Year Activities
Some details are still to be finalised. Your input is always helpful.

Saturday Workshops. Booking have been made for Saturday 8th September and 24th November.
Topics still to be organised.

—————
Mid-year Lunch in June or July venue being investigated. Possible Avalon Restaurant Katoomba

—————
Annual Holiday. 5 days in last week or two of October.

After school holidays and the Spring Exhibition. Kiama is possible.

—————
Spring Exhibition. Venue is again Leura Fairways 28th Sept to 7th October
Plein-air Painting in the Gardens is again possible but some days are to be finalised

—————
Christmas Luncheon November or December.

Venue to be decided



Activities Diary

DATE	ACTIVITY	Location	Booking
April Thurs 19th	Monthly Meeting Demonstration Artwork conservator - Kristel Smits	1.00 pm Wentworth Falls School of Arts Members Choice Theme 'Still Life'	NO
April 23-28	Autumn Art Exhibition	St Albans Church Hall Megalong St Leura	
April Thurs 26th	Plein Air Painting Lawson Old Shops Badgery Cres Previous day here cancelled due to bad weather	Meet 10am Outside Council Library Cnr Loftus St & San Jose Av.	NO
May Thurs 3rd	Paint Together & Morning Cuppa No Turps Please use No Odour Thinners	10am St. Andrews Presbyterian Church Hall Falls Rd Wentworth Falls	\$5 cost
May Thurs 17th	Monthly Meeting Demonstration Artwork Donald Mc Lean	1.00 pm Wentworth Falls School of Arts Members Choice Theme "Buildings"	NO
May Thu 24th	Plein Air Painting Woodford Academy Great Western Highway	Meet 10am At Academy.	NO
June Thur 7th	Paint Together & Morning Cuppa	10am St. Andrews Presbyterian Church Hall Falls Rd Wentworth Falls	\$5 cost
June Thur 21st	Monthly Meeting Demonstration Dennis West Demonstration "Figures in your Paintings"	1.00 pm Wentworth Falls School of Arts Members Choice Theme 'Clouds'	NO
June Thur 28th	Plein Air Painting Wendy Whitley's Garden	Details Page 4	NO
July Thur 5th	Paint Together & Morning Cuppa	10am St. Andrews Presbyterian Church Hall Falls Rd Wentworth Falls	\$5 cost
July Saturday 7th	Workshop Details to be Advised	St. Andrews Presbyterian Church Hall Falls Rd Wentworth Falls	
July Thur 19th	Monthly Meeting David Newman-White Pastels	1.00 pm Wentworth Falls School of Arts 'Jamison Award' See Page 6	NO
July Thur 26th	Plein Air Painting	TBA	
Aug Thur 16th	Monthly Meeting Demonstration Maja Meinhardt	1.00 pm Wentworth Falls School of Arts Members Choice Theme TBA	NO

Management Committee Meeting 7th May 2018 1pm Wentworth falls Country Club
Exhibition Sub-committee Meeting 7th May 2018 10am Wentworth Falls Country Club

Exhibition Calendar

AGNSW, Sydney ;

‘Unpainted’ until August 2018

The Lady and the Unicorn’ ;medieval French tapestry until 24 June

21st Biennale of Sydney 15 March until 11 June

Archibald, Wynne and Sulman prizes 2018 . starts 12 May until 8 September

SH Ervin gallery Observatory Hill. Sydney ;

‘Trust our women-‘women artists in the in the SH ERVIN gallery collection. until 6 May

Royal Botanic Gardens Sydney; Lion Gate Lodge ‘Botanica symbiosis’ botanical art 26 April until 6 May.

Maiden Theatre; Margaret Flockton Award 2018;scientific illustration of plants starts 21 April until 6 May

Australian Maritime Museum, Darling Harbour; Wildlife photographer of the Year from Natural History Museum, London until October 14

Blue Mountains Cultural Centre, Katoomba ;

Wendy Sharpe and Bernard Ollis, ‘Life and Travels’ until 6 May

New Acquisitions for the collection including work by Wendy Sharpe and James Blackwell until 6 May

Lost Bear Gallery Lurline St Katoomba ; Robyn Collier 24 March until 26 April.

Hill End Village NSW; The End-festival of arts culture and heritage;20- 22 April

Scenic World, Cliff Drive. Katoomba; Sculpture at Scenic world until 13 May

Purple Noon Gallery 606 Terrace Road, Freemans Reach ‘Places and Stories’ at Art from three desert communities - Papulankutja Artists, Tjarlirli Art, Warlukurlangu Artists - will be exhibited until May 20th 2018.

- **Wendy Whitley’s garden (city by train 7.55 ex Mt Victoria. Then train to Milsons Point. Walk 15 mins to Gardens.** Lunch Kirribilli.) If raining visit NSWAG

The garden hides amongst the Lavender Bay Parklands, which are an attractive part of Sydney Harbour– with lovely views, and, as many visitors say – a special feeling of peace and tranquillity.

- At the moment there aren't any sign posts which show directions to the garden. Best thing to do is track Wendy’s Garden Lavender Bay from Google Maps.

Lavender Bay is part of the Lower North Shore suburbs some 3 klms north of the Sydney CBD. Located in Lavender Street, Lavender Bay, the Parklands are a 5 to 10-minute walk from North Sydney or **Milsons Point railway stations** Adjacent to the garden in Harbourview Crescent is the [Kirribilli Club](#) where food, beverages and parking are available.

Garden is steep but has seating areas where you could sketch or photograph.

Autumn Art Exhibition

Remember as before there is **NO PARKING** at the Church Grounds
EXCEPT for those on duty.

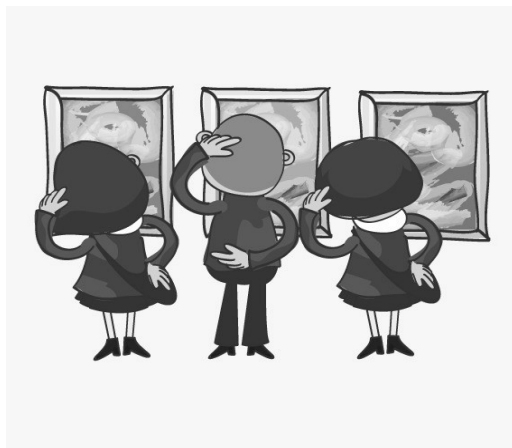


**ALSO PLEASE REMEMBER TO RETURN YOUR RAFFLE TICKETS and Money
To the First Day of Exhibition**



MEMBERS' CHOICE

If you read Peter's President Report you will have seen mention of Themed
mini-exhibitions at the Monthly Meetings.

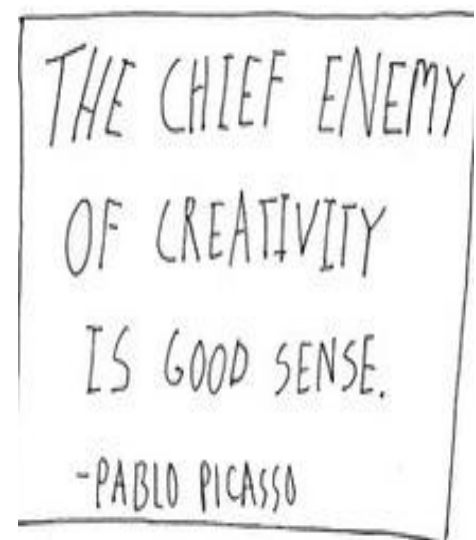


Starting in April we are going to trial a themed painting award at monthly meetings; while it will not make you rich it will encourage you to show your work to colleagues and get some helpful and constructive feedback. April's topic is 'Still Life'; May, Buildings; June, Clouds .

Members will vote for their CHOICE as the winning painting

Gift Voucher Award

Paintings entered in Monthly Themes are eligible for Main Exhibitions



Help the Environment

Some members are bringing their own cup or mug to the Meetings.

Saves the use of poly cups.



LIBRARY

Did you miss one of the previous meeting Demonstrations?

DVDs of most of the demonstrations are available in the Library for loan for members.

Check them out

Paint Together & Morning Cuppa

10am **St. Andrews** Presbyterian Church Hall Falls Rd Wentworth Falls

First Thursday of the Month

PLEASE NOTE

Because the odour from Turps causes discomfort to other members it is requested that members

use a non odour substitute eg.

Gamsol Odourless Mineral Spirits, Baby Oil (does make Paints slower to dry,

Low Odour Turps (Still a slight smell)

Baby Wipes are great for cleaning off brushes

Jamison Award July Meeting

Each year we hold the Award which is acquisitive judged by peer acclaim. The painting then becomes the Raffle Prize for the Spring Exhibition

If you wish to take part bring a painting to the July meeting.

Members vote on which they think is the most suitable.

The Society will reimburse or pay for the cost of framing.

The painting may be any medium
Must be the original work of the artist.
Not a copy or done as part of a workshop