



Society of Mountain Artists Inc.

Featuring the works of Artists from the Blue Mountains in New South Wales, Australia
30th Anniversary Year 1986 - 2016

June 2016

NEWSLETTER

Issue No 306

Mail P.O. Box 76 Wentworth Falls 2782—Email secretary@mountainartists.org

Monthly Meetings at Wentworth Falls School of Arts Great Western Hwy Wentworth Falls

Website / Gallery www.mountainartists.org

Management Committee

PRESIDENT	Peter Ayres	4758 9005	LIBRARIAN	Maunie Kwok	4757 3550
VICE-PRESENT	Marie Morris	4787 1257	ORDINARY MEMBER	David Dodd	4757 1535
SECRETARY	Patricia Carruthers	4758 7172	ORDINARY MEMBER	Alfred Blakers	4751 6359
TREASURER	Nancy Dodd	4757 1535	ORDINARY MEMBER	Ann Warnes	
			ORDINARY MEMBER	Marlene Strathdee	4787 8681

Patron: John Wilson FRAS

Membership / Web John Finnerty 4757 4324
Records jf Finnerty@bigpond.com

Editor: Alfred (Fred) Blakers 4751 6359 alfie-b@bigpond.com
Articles required by 2nd Monday of month

President's Message

Hopefully everyone has escaped the worst of the wet and windy weather but used the time indoors to get the paint brushes out. You will note from the diary that we plan to introduce a few departures from the normal monthly demonstrations. We are lucky in having Marlene Strathdee as a qualified optometrist make a presentation on eyes and eyesight issues which should be instructive and useful to us all. As we get older and especially as artists we likely all particularly value our eyesight and optical health so this might be very pertinent to us.

We have also asked David Newman White, a respected artist and teacher to critique members work so I hope you take advantage of his expertise. At our final meeting in November, John Hockney of Leura and brother of the famous artist will give a presentation on David Hockney's work. At the the June meeting there will be a short informal member survey form for everyone to complete if they wish. This will hopefully help us better meet the expectations you have of the Society and indeed whether or not it meets these or could do better?

Also out for Expressions of interest will be sheet outlining the proposed painting holiday at Turon Gates. This location on the Turon river off the Mudgee road has multiple occupancy, self catering cabins and camp sites. They offer reduced weekday rates for seniors which would suit our Monday to Friday requirements..Further details are available on the 'turon Gates.com' website

The SMA has booked St Andrews church hall in Falls Rd between 10 and 4pm on Saturday 3 Sept to reach out and welcome prospective new members who are perhaps working during the week or otherwise unable to attend our normal activities. If you know anyone who paints/draws or wants to give it a go encourage them to come along. Participants should bring their lunch but tea /coffee will be available. If this is successful we can look to making it a more regular event. Stay warm and keep creating.

Peter Ayres

Exhibition calendar

Manly Art Gallery; 'Bimblebox' starts 1 July until 4 Sept.

Julie Davis 'Dark Matter' starts 1 July until 4 Sept

Peter Tilley and Andy Devine; 'Black Harvest' –Newcastles dark past. 4 July until 4 September

BM Cultural Centre Katoomba. The collection –various local artists until 24 July.

Archibald Prize Regional tour until 24 July

Royal Art Society Lavender Bay Gallery. 'An intimate look' until 26 June

AGNSW, Sydney.;

Tang Treasures from the Silk Road capital until July 10

Frida Kahlo and Diego Rivera from the Gelman collection starts 25 June

Tracey Mofatt; 'Laudanum and other works' until 4 Sept

Landscapes of Pleasure from Monet to David Hockney

SH Ervin gallery Observatory hill.

Revealed ;the Gallery collection in conservation action.; starts 7 June until 24 June-various dates. check website

Salon D'refuses from Archibald and Wynne prizes 16 July until 18 Sept.

Australian Watercolour Institute, Juniper Hall ,Oxford St ,Paddington. 'The Luminous World of Watercolour ' until 10 July

Art Site Gallery, Camperdown ; John Caldwell and Bernd Heinrich .until 26 June

Orange Regional Gallery 'Best in Show' Dogs in Australian Art

Until 3 July

National Gallery of Victoria, Melbourne; 'Degas –a new vision' paintings, drawings prints etc starts 24 June

Spring Exhibition News

Gabrielle Jones and kindly agreed to judge and open the Spring exhibition.

"Gabrielle Jones is an exciting and innovative painter and teacher who lives in Wentworth Falls. She was born and grew up in Sydney. She has won many prizes including the prestigious William Fletcher Trust Grant; has had solo exhibitions and has held Artist in Residence positions at the Bundanon Trust, in Tahiti, Spain and Canada. She has also run workshops at the Blackheath Art Society's premises."

Jamison Award July Meeting

Each year we hold the Award which is acquisitive judged by peer acclaim.

The painting then becomes the Raffle Prize for the Spring Exhibition

If you wish to take part bring a painting to the July meeting.

Members vote on which they think is the most suitable.

The Society will reimburse or pay for the cost of framing.

The painting may be any medium

Must be the original work of the artist.

Not a copy or done as part of a workshop

Activities Diary

Management Committee Meeting 4th July 2016 1pm
Exhibition Sub-committee Meeting 4th July 10am Wentworth Falls Country Club

June Thur 16th	Monthly Meeting Demonstration Ray Harrington	1.00 pm Wentworth Falls School of Arts	NO
June Tues 21st	No longer on See Below	10am Wentworth Falls Country Club Blaxland Road Downstairs Meeting Room	Social Member ship
June Thur 23rd	Plein Air Painting Trains See Below	Old Government House Parramatta Park Historic buildings, river views, gardens Close to Parra Rail Station	No
June Thurs 30th	30th Anniversary Luncheon	Grand View Hotel Wentworth Falls	YES
July Thurs 7th	Paint Together & Morning Cuppa Invitation to members to join Website Gallery SEE PAGE 4	10am St. Andrews Presbyterian Church Hall Falls Rd Wentworth Falls	\$5 cost
July Thur 21st	Monthly Meeting Marlene Strathdee Know your Eyes Jamison Award See Page 2 For Conditions	1.00 pm Wentworth Falls School of Arts Members bring a Painting	NO
July Thur 28th	Art Video and Discussion Numbers will be Limited	Dennis West's Home 39 Yanko Ave Wentworth Falls Bookings Essential 4757 3135	YES
Aug Thur 4th	Paint Together & Morning Cuppa Invitation to members to join Website Gallery SEE PAGE 4	10am St. Andrews Presbyterian Church Hall Falls Rd Wentworth Falls	\$5 cost
Aug Thur 18th	Monthly Meeting Painting Critique by David Newman-White	1.00 pm Wentworth Falls School of Arts Bring a Painting	NO
Aug Thur 25th	Trip to New South Wales Art Gallery	Train Time table below	NO
29th Aug To Fri 2nd Sep	Annual Holiday	Turon Gates See Page 5	Yes
Sept Thur 1st	Paint Together & Morning Cuppa	10am St. Andrews Presbyterian Church Hall Falls Rd Wentworth Falls	\$5 cost
Sept Saturday 3rd	Open Invitation and Paint Together & Morning Cuppa	10am –4pm St. Andrews Presbyterian Church Hall Falls Rd Wentworth Falls	Nil
Sept Thur 15th	Monthly Meeting Demonstration Melissa Read Devine	1.00 pm Wentworth Falls School of Arts	NO

NOTE:

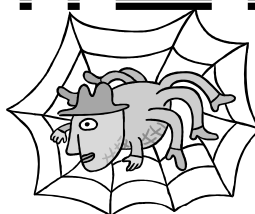
The Paining Paint together on third Tuesdays at **Wentworth Falls Country Club** Blaxland Road Downstairs Meeting Room
Have s been unfortunately cancelled due to lack of numbers

Train Timetable

Suggest 2nd carriage from front (not quiet carriage as most will want to chat)

am Mt Vic **8.07** (WWF **8.36**).....Parra **10.03**.....Central **10.14**

pm Central **14.18**.....Parra **14.43**.....Mt Vic **16.40** **OR** Central **15.18**....Parra **15.52**.....Mt Vic **17.37**



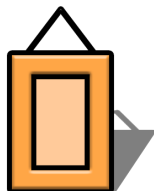
The Society's Website Sub-Committee are keen to see the diversity and scope of members work being represented on our Website Gallery.

If having photos of your work is proving a barrier to you exhibiting through the Society's On-line Gallery there is an easy solution.

At the next two 'Paint Together and Morning Cuppa' sessions being held at St. Andrews Presbyterian Church Hall, Falls Rd Wentworth Falls, on July 7th and August 4th from 10-12, members of the sub-committee will photograph your paintings ready for uploading onto the gallery site.

All you need to do to take advantage of this opportunity is:

- Read and/or bring along the completed Terms and Conditions of the SMA Website Gallery & Facebook 'Albums' (available on the Society's Website- a copy will also be available on the day);
- Bring your own work(s) to be photographed;
- Bring a statement/bio about yourself of no more than 300 words;
- Sign the Artists Waiver;
- Pay the Gallery fee of \$20 if joining the Gallery for the first time, or \$10 if renewing.



We will do the rest which includes taking the images of your work and uploading them to the gallery. It is easy and gives you the opportunity to display your work in our online gallery.



SATURDAY MEETING PAINT TOGETHER and INFORMATION DAY

The question is often raised by some members or prospective members as to whether some activities could be held on weekends.

The Paint togethers at **St. Andrews** Presbyterian Church Hall Falls Rd Wentworth Falls have been very successful.

So we are going to have similar day as a trial on Saturday 3rd September. 10am to 4pm

Members PLEASE turn up to paint also bring any friends who may possibly like to paint OR just find out what the Society has to offer

Bring your paints and Lunch.

Tea and coffee / biscuits provided



ANNUAL HOLIDAY

Monday 29th August - Friday 2nd September

TURON GATES CABINS

Turon Gates is an authentic bush hideaway, tranquil and unspoilt only 2.5 hours from Sydney. It is located in the Blue Mountains on the way to Mudgee. With 7 well-built rustic log cabins situated along 15km of crystal clear trout stream and 6 cottages with sensational mountain views, Turon Gates has long been an all-year-round favourite holiday destination for many Australian couples and families.

Our multiple Blue Mountain cabin & camping options are unique and have been featured in a popular TV travel program as one of its '10 favourite destinations' winners.

Particularly our cabin accommodation is an idyllic escape in the Australian bush.

Enjoy waking up to the sounds of the bush, the chatter of the birds and the animals that come to the river for a drink. Turon Gates is abound with wildlife, kangaroos, wombats, platypus, echidnas, possums, bush lizards are all part of the Turon experience!

There is much to do, or nothing to do - the choice is yours when you come to Turon Gates!



\$360 per cabin for two plus \$120 pp for additional persons.

Bring your own
Food/Drinks, Sheets, Pillow cases,
Towels, Tea towels, Torch, Matches,
Tissues, Toilet Paper, Aeroguard.

Rugs old pillows for outside lounging.

Pets welcome

Check out website for full Details www.turongates.com

DIRECTIONS

Drive through/past Lithgow and follow the signs to Mudgee (Castlereagh Highway) until you come to a small village called Capertee (approximately 25 mins from Lithgow). Continue through Capertee for about 1.5 kms and you will see a sign for Turon Gates on the left.

Do not use GPS's to find Turon Gates Rd, please use our written instructions

NOTE: When you reach the end of the Google Maps directions, please turn left onto Turon Gates Road.

It's 4-6 kms to the mountain cottages (depending which one!) and 12 kms to the river cottages and camping ground - follow the signs and cattle grids.

