



Society of Mountain Artists Inc.

Featuring the works of Artists from the Blue Mountains in New South Wales, Australia

June 2015

NEWSLETTER

Issue No 295

Mail P.O. Box 76 Wentworth Falls 2782—Email secretary@mountainartists.org

Monthly Meetings at Wentworth Falls School of Arts Great Western Hwy Wentworth Falls

Website / Gallery www.mountainartists.org

Management Committee

PRESIDENT	Peter Ayres	4758 9005	LIBRARIAN	Maunie Kwok	4757 3550
VICE-PRESENT	Marie Morris	4787 1257	ORDINARY MEMBER	Ann Warnes	
SECRETARY	Lia Johnston	4782 4408	ORDINARY MEMBER	Alfred Blakers	4787 5870
TREASURER	Patricia Carruthers	4758 7172	ORDINARY MEMBER	Francis Lipscombe	
Assistant Treasurer	Marlene Strathdee	4787 8681			

Patron: John Wilson FRAS

Membership / Web John Finnerty 4757 4324
Records jfynnerty@bigpond.com

Editor: Alfred (Fred) Blakers 4787 5870 alfieb@eftel.net.au
Articles required by 2nd Monday of month

President's Message

The perspective workshop by David Newman White held recently at Wentworth Falls was well received by the members who attended. As someone who has been drawing since I was a child I must say I thought I had it all sorted but David's perspective [excuse the pun] on how the concept had evolved in art work over the centuries was very enlightening.

The mid year luncheon at Secret Creek Lithgow on Thursday 25 July has been well subscribed and a booking made for 30 people. This should be an enjoyable social event and the July meeting will be your last chance to put your name down if you want to come.

I plan to send out the accommodation options and prices to all who have indicated they want to go to on the SMA painting to Mudgee, but if you want to come this meeting is your last chance to be included as bookings need to be made. Please decide if you want to share [and who with] as cabins and villas are limited in number.

Our demonstrator programme for the rest of 2015 has been finalised and details are in your newsletter. If you have any ideas or favourites which you would like to see included next year speak up, and if you want to organise it, all the better!

For those of you who get the newsletter by email remember that this July meeting will include members choice for the Jamison award. You must be willing to donate the selected work but the Society will reimburse any framing costs you have incurred. The selected work will be the major raffle prize at the Spring exhibition which is an important fund raiser and show case for the SMA.

This cold weather is a good excuse to stay in and paint so get those brushes out

Happy painting and stay warm!

Peter Ayres

Exhibition Calendar; June onwards

Hawkesbury Regional Gallery, George St, Windsor. 'Big Ci' survey of artists from the Bilpin International Ground for Creative Initiatives. 19 June -10 August.

State Library of NSW, Macquarie St, Sydney; 'Inspiration by Design' from the V&A London and 'Australian Inspiration' [design] starts 8 July until 27 September.

AGNSW 'Matisse and the Moderns' until 25 October

'Mad through the darkness' Australian Artists and the Great War. Until 11 October
Archibald, Wynne and Sulman prizes exhibition. Starts 18 July until 27 September

NSW Parliament Plein Air painting prize [main foyer and downstairs] finishes 3 August

SH Ervin Gallery, Observatory Hill, Sydney. 'Painter in Paradise-William Dobell in New Guinea. Finishes 12 July

Salon des Refuses 2015; Alternative Selection from the Archibald and Wynne Prizes starts 18 July until 13 September.

Gallery Blackheath; 9x5 exhibition. Starts July 10 until 20 August

The Sculptors Society [TWO exhibitions] AMP Building 50 Bridge St Sydney until 7 August
and Angel Place 123 Pitt Street Sydney until 21 August

Jamison Award July Meeting

Each year we hold the Award which is acquisitive judged by peer acclaim.

The painting then becomes the Raffle Prize for the Spring Exhibition

If you wish to take part bring a painting to the July meeting.

Members vote on which they think is the most suitable.

The Society will reimburse or pay for the cost of framing.

The painting may be any medium

Must be the original work of the artist.

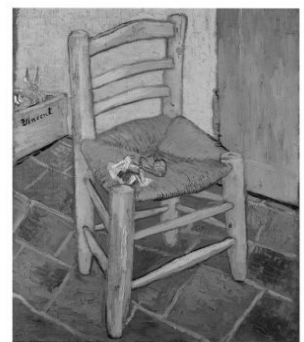
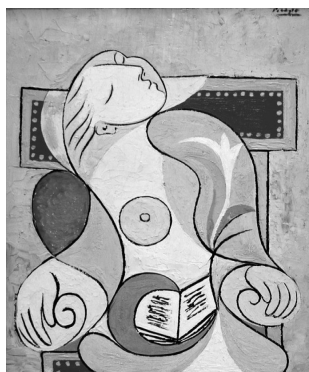
Not a copy or done as part of a workshop

FABULOUS FAKES

Christmas Meeting 19th November. Last meeting for 2015.

For a bit of fun you are asked to copy your favourite well known painting.
Members' Choice with a small prize.

Many artists copy famous paintings as a learning exercise. It is more popular in overseas galleries than in Australia. So here is your chance



Activities Diary

Exhibition Sub-committee Meeting 3rd Aug 10am Wentworth Falls Country Club
Management Committee Meeting 3rd Aug 2015 1pm

July Thurs 16th	MONTHLY MEETING John Wilson Demonstration Jamison Award (see page 2)	1.00 pm Wentworth Falls School of Arts	NO
July Tues 21st	Paint Together No Oils	10am Wentworth Falls Country Club Blaxland Road Downstairs Meeting Room	Social Mem- ber ship
July Thurs 23rd	Mid-Year Luncheon Directions Page 5	Secret Creek Restaurant 35 Crane Rd, Lithgow 12noon for 12.30 lunch BYO	YES
Aug Thurs 6th	Paint Together & Morning Cuppa	10am St. Andrews Presbyterian Church Hall Falls Rd Wentworth Falls	\$5 cost
Aug Tues 18th	Paint Together No Oils	10am Wentworth Falls Country Club Blaxland Road Downstairs Meeting Room	Social Mem- ber ship
Aug Thurs 20th	MONTHLY MEETING Maja Meinhof Watercolour Demonstration	1.00 pm Wentworth Falls School of Arts	NO
Aug Thurs 27th	Portrait Drawing Activity Members taking turns drawing each other	10am St. Andrews Presbyterian Church Hall Falls Rd Wentworth Falls	\$5 cost
Aug 31st -Sep 4th	Annual Holiday	Riverside Park Cabins Mudgee	YES ASAP
Sep Thurs 3rd	Paint Together & Morning Cuppa	10am St. Andrews Presbyterian Church Hall Falls Rd Wentworth Falls	\$5 cost
Sep Tues 15th	Paint Together No Oils	10am Wentworth Falls Country Club Blaxland Road Downstairs Meeting Room	Social Mem- ber ship
Sep Thurs 17th	MONTHLY MEETING Jane Canfield demonstration	1.00 pm Wentworth Falls School of Arts	NO
Sep Thurs 24th	Plein-Air Painting	Nepean River Yarramundi	NO
Oct Thurs 1st	Paint Together & Morning Cuppa	10am St. Andrews Presbyterian Church Hall Falls Rd Wentworth Falls	\$5 cost
Oct 2nd—11th	Spring Exhibition Leura Garden Plein-air Competition	Leura Fairways	
Oct Thurs 15th	MONTHLY MEETING Mischa Bowoski	1.00 pm Wentworth Falls School of Arts	NO
Oct Tues 20th	Paint Together No Oils	10am Wentworth Falls Country Club Blaxland Road Downstairs Meeting Room	Social Mem- ber ship
Oct Thurs 22nd	Plein-Air Painting	Govetts Leap Lookout Blackheath	NO
Nov Thurs 5th	Paint Together & Morning Cuppa	10am St. Andrews Presbyterian Church Hall Falls Rd Wentworth Falls	\$5 cost
Nov Tues 17th	Paint Together No Oils	10am Wentworth Falls Country Club Blaxland Road Downstairs Meeting Room	Social Mem- ber ship
Nov Thurs 19th	CHRISTMAS MEETING Member's Choice Fabulous Fakes	1.00 pm Wentworth Falls School of Arts	NO



Demonstrations by artists at the Monthly Meetings in many cases have been copied onto DVD's. This has been done with the artist's permission.

These DVD's are available for lending from the Library.
So if you would like to refresh the details of these demonstrations
Check at the Library

Help is **STILL** required in setting up and serving the Afternoon Teas
at the monthly meetings. Barbara's usual helper is unavailable
due to family health problems..

Possibly a some long term volunteers would be great.



So if you have a secret desire to be a Tea Lady or Gent now is your chance.

SPRING EXHIBITION

Early tips to help with planning your entries

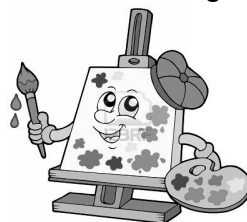
Sections are still the same but Contemporary is renamed BEYOND REALITY.
Hope this prompts some extra grey cell activity with your art work

The number and size of paintings has been amended

Maximum number of paintings
Five (5) at up to 380cm (150") Maximum outside dimensions (Perimeter)

All may be entered in any Section or split up as you wish
Full conditions and Entry Forms will be available in August Newsletter

Judge for the Exhibition this year is Graham Marchant
Sydney based Artist working from Balmain

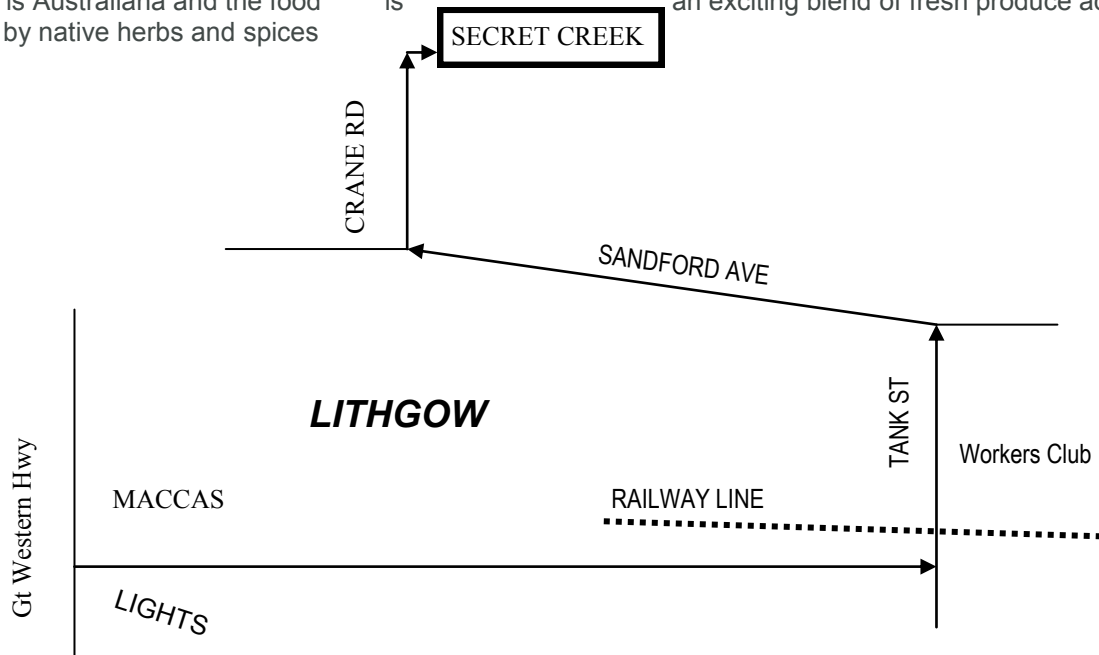


Mid-Year Luncheon Secret Creek Restaurant 35 Crane Rd, Lithgow 12noon for 12.30 lunch BYO

Secret Creek Café & Restaurant has been operating since December 2004 and is situated in an idyllic setting just 2 minutes drive from the centre of Lithgow on the edge of the Blue Mountains but it feels like you are miles away from civilisation.

The restaurant is located within Secret Creek Sanctuary. The sanctuary was set up to provide a feral proof enclosure where endangered native species can be brought back to the area. The sanctuary is also home to the largest Eastern Quoll population on the mainland. Interpretative walks are available by appointment only.

Secret Creek is the perfect place to get away from your busy day. Perfect to have a business meeting, catch up with friends for coffee and cake, have your next party or for an intimate lunch or dinner. The building itself is an award winning timber slab log building with each log adzed by hand. The theme of the restaurant is Australiana and the food is an exciting blend of fresh produce accompanied by native herbs and spices



JULY 16th DEMONSTRATION

John Wilson sought after as a Painter. Tutor and Judge. He has been painting for over 42 years. Is a Fellow of the Royal Art Society of New South Wales as well as our Patron.

Multi Award winning artist with over 41 Solo Exhibitions

He has exhibited in London, USA, Japan, Canada and Beijing in 2007.

John has exhibited in Seoul Korea in 2011

Welcome New Members

Susan Helps Leura
Judith Edmonds Wattle Grove



GO ON LINE AND CHECK OUT OUR NEW WEBSITE

JOIN THE ONLINE GALLERY
*Gallery Exhibitors are now featured monthly on
the Home Page*



www.mountainartists.org

If Not Delivered Return to
Society of Mountain Artists Inc.
PO Box 76
Wentworth Falls 2782