



Society of Mountain Artists Inc.

Featuring the works of Artists from the Blue Mountains in New South Wales, Australia

June 2015

NEWSLETTER

Issue No 295

Mail P.O. Box 76 Wentworth Falls 2782—Email secretary@mountainartists.org

Monthly Meetings at Wentworth Falls School of Arts Great Western Hwy Wentworth Falls

Website / Gallery www.mountainartists.org

Management Committee

PRESIDENT	Peter Ayres	4758 9005	LIBRARIAN	Maunie Kwok	4757 3550
VICE-PRESIDENT	Marie Morris	4787 1257	ORDINARY MEMBER	Ann Warnes	
SECRETARY	Lia Johnston	4782 4408	ORDINARY MEMBER	Alfred Blakers	4787 5870
TREASURER	Patricia Carruthers	4758 7172	ORDINARY MEMBER	Francis Lipscombe	
Assistant Treasurer	Marlene Strathdee	4787 8681			

Patron: John Wilson FRAS

Membership / Web John Finnerty 4757 4324
Records jfynnerty@bigpond.com

Editor: Alfred (Fred) Blakers 4787 5870 alfieb@efel.net.au
Articles required by 2nd Monday of month

President's Message

A small but hardy group of plein air devotees attended the last get together until Spring at the Mt Tomah botanic garden and the sun shone us at least for the morning. If you have any ideas for future venues when we resume our excursions let us know so we can start planning now.

Welcome back to our Treasure Pat Carruthers on return from her overseas trip and many thanks to Marlene Strathdee for doing an excellent job deputising in that role during Pats' absence. On the subject of finance please be sure to bank any cheques you get from the Society asap as it facilitates reconciliation of our accounts.

In spite of my appeals to everyone Rhys Jones kindly ended up bringing his suggestion of a Facebook page to fruition so I hope you followers have a look. It is mainly designed as a vehicle for promoting the Society and its activities to prospective members in the community where we need to increase our visibility.

In lieu of the plein air outing on Thursday 23 July Secret Creek at Lithgow have kindly agreed to open especially for our members and guests. 12 noon for lunch at 12.30 and its BYO so come along for our mid year lunch. There is a sheet out at the meeting if you haven't put your name down. On a similar theme the Riverside Park at Mudgee are presently able to offer us a good choice of villas and cabins for our annual painting holiday 31 Aug until 4 Sept at reasonable prices but we must book soon to secure this. A sheet will be out on the table at the meeting or email/phone me ASAP.

Our demonstrator for the June meeting is local artist Rachel Szalay and in July we are lucky to have our Patron, John Wilson demonstrate for us again. So make a note in your diary. A reminder here that our November meeting will be a bring a painting but contrary to our caution on copyright this your chance to 'reproduce' your favourite work. Use these days indoors in the warm to think about your entry and of course your entries for the Spring Exhibition. Seems a long way off now but planning for it is well underway and it will be here before you know it !!

Happy painting and stay warm!

Peter Ayres

Exhibition Calendar; June onwards

Braemar Gallery ,Macquarie Rd, Springwood; 'Carry on Creating' Until 28 June

Lost Bear Gallery, Lurline St ,Katoomba; Herman Pekel oils.until 24 June

Hawkesbury Regional Gallery,George St ,Windsor. 'Big Ci' survey of artists from the Bilpin International Ground for Creative Initiatives.19 June -10 August.

State Library of NSW, Macquarie St, Sydney;' Inspiration by Design' from the V&A London and 'Australian Inspiration '[design] starts 8 July until 27 September.

MCA Circular Quay. 'My Fellow Aus-tra-Aliens' by Alexs Danko.

RAS Lavender Bay N. Sydney; Retrospective exhibition by Pamela Thalbow –Ball FRAS until 5 July.

AGNSW 'Matisse and the Moderns' until 25 October

NSW Parliament Macquarie St; 'NSW Plein Air Painting Prize' –finalists 17 June until 2 August.

SH Ervin Gallery, Observatory Hill, Sydney. 'Painter in Paradise-William Dobell in New Guinea. Finishes 12 July Salon des Refuses 2015; Alternative Selection from Archibald and Wynne Prizes starts 18 July until 13 September.

NGV Melbourne; Masterpieces from the legacy of Catherine the Great; 400 Old Masters.

Jamison Award July Meeting

Each year we hold the Award which is acquisitive judged by peer acclaim.

The painting then becomes the Raffle Prize for the Spring Exhibition

If you wish to take part bring a painting to the July meeting.

Members vote on which they think is the most suitable.

The Society will reimburse or pay for the cost of framing.

The painting may be any medium

Must be the original work of the artist.

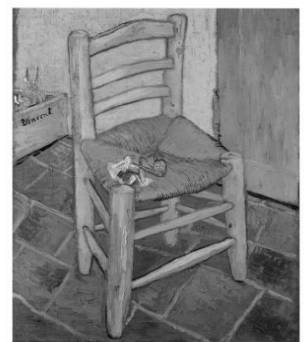
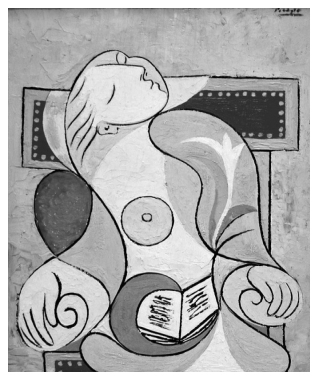
Not a copy or done as part of a workshop

FABULOUS FAKES

Christmas Meeting 19th November. Last meeting for 2015.

For a bit of fun you are asked to copy you favourite well known painting.
Members' Choice with a small prize.

Many artists copy famous paintings as a learning exercise. It is more popular in overseas galleries than in Australia. So here is your chance



Activities Diary

Exhibition Sub-committee Meeting 6th July 10am Wentworth Falls Country Club
Management Committee Meeting 6th July 2015 1pm

June Thurs 18th	MONTHLY MEETING Rachel Szalay Demonstration	1.00 pm Wentworth Falls School of Arts	NO
June Thurs 25th	Plein Air Painting Activity	To be decided ???	
July Thurs 2nd	Paint Together & Morning Cuppa	10am St. Andrews Presbyterian Church Hall Falls Rd Wentworth Falls	\$5 cost
July Thurs 16th	MONTHLY MEETING John Wilson Demonstration Jamison Award (see page 2)	1.00 pm Wentworth Falls School of Arts	NO
July Tues 21st	Paint Together No Oils	10am Wentworth Falls Country Club Blaxland Road Downstairs Meeting Room	Social Mem- ber ship
July Thurs 23rd	Mid-Year Luncheon	Secret Creek Restaurant 35 Crane Rd, Lithgow 12noon for 12.30 lunch BYO Directions Page 5	YES
July Sat 25th	David Newman White Perspective Workshop	10.30am to 3pm at Wentworth falls Country Club \$30 ea. 13 people attending min.	YES
Aug Thurs 6th	Paint Together & Morning Cuppa	10am St. Andrews Presbyterian Church Hall Falls Rd Wentworth Falls	\$5 cost
Aug Tues 18th	Paint Together No Oils	10am Wentworth Falls Country Club Blaxland Road Downstairs Meeting Room	Social Mem- ber ship
Aug Thurs 20th	MONTHLY MEETING Maja Meinhof Watercolour Demonstration	1.00 pm Wentworth Falls School of Arts	NO
Aug Thurs 27th	Portrait Drawing Activity Members taking turns drawing each other	10am St. Andrews Presbyterian Church Hall Falls Rd Wentworth Falls	\$5 cost
Aug 31st -Sep 4th	Annual Holiday	Riverside Park Cabins Mudgee	YES ASAP
Sep Thurs 3rd	Paint Together & Morning Cuppa	10am St. Andrews Presbyterian Church Hall Falls Rd Wentworth Falls	\$5 cost
Sep Tues 15th	Paint Together No Oils	10am Wentworth Falls Country Club Blaxland Road Downstairs Meeting Room	Social Mem- ber ship
Sep Thurs 17th	MONTHLY MEETING Jane Canfield demonstration	1.00 pm Wentworth Falls School of Arts	NO
Oct 2nd—11th	Spring Exhibition Leura Garden Plein-air Competition	Leura Fairways	
Oct Thurs 15th	MONTHLY MEETING demonstration	1.00 pm Wentworth Falls School of Arts	NO
Nov Thurs 19th	CHRISTMAS MEETING Member's Choice Fabulous Fakes	1.00 pm Wentworth Falls School of Arts	NO



Demonstrations by artists at the Monthly Meetings in many cases have been copied onto DVD's. This has been done with the artist's permission.

These DVD's are available for lending from the Library.
So if you would like to refresh the details of these demonstrations
Check at the Library

Help is required in setting up and serving the Afternoon Teas at the monthly meetings. Barbara usual helper is unavailable due to family health problems..

Some one for this meeting is urgently required.
Possibly a long term volunteer would be great.



So if you have a secret desire to be a Tea Lady or Gent now is your chance.

June Demonstration RACHEL SZALAY

With a degree in visual arts from The City Art Institute (Sydney-1985) and a diploma in acting from The National Institute of Dramatic Art (N.I.D.A.-Sydney 1988), I have pursued a career in both art and theatre. Both areas tend to fuel and complement each other well.

In 2001, I moved to the Blue Mountains, NSW, (after living in Sydney for 16 years), to concentrate on art and prepare for a group exhibition at the Sydney Theatre Company with Max Cullen and Geoff Morrell. The end result was 12 large works which focused on my interest in Greek mythology and surrealism, through the medium of drawing (ink, pastel, charcoal, collage).

This exhibition led to another group showing called *Actors as Artists* (Nov 2001) at North Sydney Fine Art Gallery.

I have had numerous solo and group exhibitions throughout Sydney and the Blue Mountains and many commercial and private commissions. I rise to the challenge of commissioned work and consider pastels and oils my specialty.

My style is eclectic and my influences are many, stemming from the 16th century Flemish artist, Hieronymus Bosch; Albrecht Durer; the Spanish combination of Goya, Gaudi, Picasso; the 20th century Surrealist movement and Australian painters; Brett Whitely, Arthur Boyd, Fred Williams, James Gleeson, Fred Cress & Norman Lindsay, to name a few.

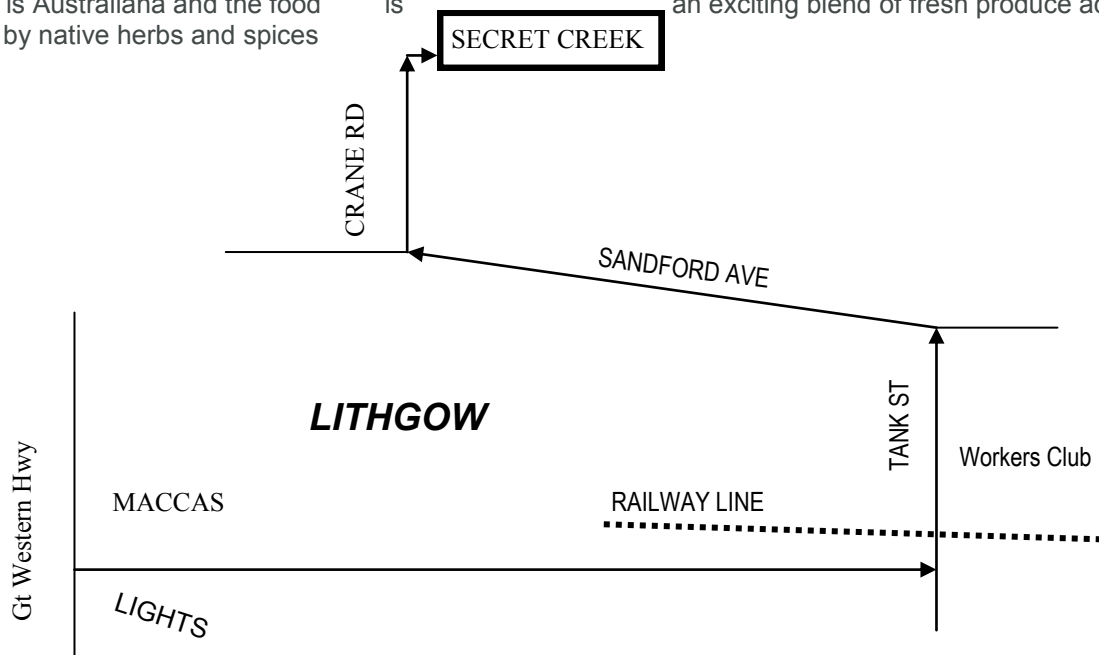
All of these influences provide the key to unlocking self expression, with the ultimate purpose of creating my own niche. It is this journey of discovery that I relish.

Mid-Year Luncheon Secret Creek Restaurant 35 Crane Rd, Lithgow 12noon for 12.30 lunch BYO

Secret Creek Café & Restaurant has been operating since December 2004 and is situated in an idyllic setting just 2 minutes drive from the centre of Lithgow on the edge of the Blue Mountains but it feels like you are miles away from civilisation.

The restaurant is located within Secret Creek Sanctuary. The sanctuary was set up to provide a feral proof enclosure where endangered native species can be brought back to the area. The sanctuary is also home to the largest Eastern Quoll population on the mainland. Interpretative walks are available by appointment only.

Secret Creek is the perfect place to get away from your busy day. Perfect to have a business meeting, catch up with friends for coffee and cake, have your next party or for an intimate lunch or dinner. The building itself is an award winning timber slab log building with each log adzed by hand. The theme of the restaurant is Australiana and the food is an exciting blend of fresh produce accompanied by native herbs and spices



JULY 16th DEMONSTRATION

John Wilson sought after as a Painter. Tutor and Judge. He has been painting for over 42 years. Is a Fellow of the Royal Art Society of New South Wales as well as our Patron.

Multi Award winning artist with over 41 Solo Exhibitions

He has exhibited in London, USA, Japan, Canada and Beijing in 2007.

John has exhibited in Seoul Korea in 2011

Welcome New Member

Annie Pigott Mount Wilson



**GO ON LINE AND CHECK OUT OUR NEW WEBSITE
JOIN THE ONLINE GALLERY
www.mountainartists.org**



If Not Delivered Return to
Society of Mountain Artists Inc.
PO Box 76
Wentworth Falls 2782