



Society of Mountain Artists Inc.

Featuring the works of Artists from the Blue Mountains in New South Wales, Australia

May 2015

NEWSLETTER

Issue No 294

Mail P.O. Box 76 Wentworth Falls 2782—Email secretary@mountainartists.org

Monthly Meetings at Wentworth Falls School of Arts Great Western Hwy Wentworth Falls

Website / Gallery www.mountainartists.org

Management Committee

PRESIDENT	Peter Ayres	4758 9005	LIBRARIAN	Maunie Kwok	4757 3550
VICE-PRESENT	Marie Morris	4787 1257	ORDINARY MEMBER	Ann Warnes	
SECRETARY	Lia Johnston	4782 4408	ORDINARY MEMBER	Alfred Blakers	4787 5870
TREASURER	Patricia Carruthers	4758 7172	ORDINARY MEMBER	Francis Lipscombe	
Assistant Treasurer	Marlene Strathdee	4787 8681			

Patron: John Wilson FRAS

Membership / Web John Finnerty 4757 4324
Records jfynnerty@bigpond.com

Editor: Alfred (Fred) Blakers 4787 5870 alfieb@eftel.net.au
Articles required by 2nd Monday of month

President's Message

Hopefully we managed to contact most of you at the last minute when on Councils' advice we had to cancel the April members meeting due to storm damage at the Hall. Apologies to those that turned up and pleased to confirm that Jane Canfield has agreed to be our September demonstrator instead.

The Autumn exhibition at St Albans went well with modest sales of framed /unframed paintings as well as a lot of cards. The exhibition committee has recommended we purchase more spot light tracks and this has been approved by the management committee as they are a particular asset where natural lighting is lacking.

The April plein air gathering at Mount York was a select affair but we were blessed with a beautiful sunny day at last and some stunning views. Our May venue will be Mt Tomah Botanic Garden and this will be the last until the spring.

Other activities including a perspective drawing workshop and mid year luncheon have been arranged for June /July dates [see diary]. Sheets for these and the annual holiday will be out for expressions of interest at the meeting.

Please note we will also have a section of picture frames and small canvas boards for sale at bargain prices thanks to a kind donation to the Society by Fely Walsh. Our demonstrator will be local artist Owen Thompson.

Next year will be the Society's 30th anniversary so we are proposing a small painting [9X5 inches] competition but other ideas on how we should mark this important milestone will be most welcome.

Peter Ayres

Exhibition Calendar May 2015

Blue Mountains Cultural Centre Katoomba

John Caldwell 'Journeys' until 28 May
Day Fine Art, Blackheath; 'Land in Love' by Claire Nakazawa until 8 th June.
Manly Gallery; 'Saltwater country' works by 16 of Queensland's leading indigenous artists. Until 28 June
'A Sense of Here' Paintings by Juliet Holmes a Court. Until 28 June

MCA Circular Quay;

LIGHT SHOW an exhibition from the Hayward Gallery London until 5 July

AGNSW; 'The Photograph and Australia' until 9 June .

Evelyn Chapman; 'Mad Through Darkness; from 25 April
'Matisse and the Moderns' from 28 April

Hawkesbury Regional Gallery ,George St Windsor.

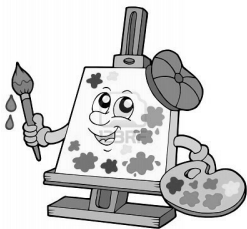
Laura Jones , 'Still Life' and David Lowery/Jaki Middleton 'Survey until 24 May

Australian Museum Sydney ; 'Wildlife Photographer of the Year' until 5 October

Jamison Award

Each year we hold the Award which is acquisitive judged by peer acclaim.
The painting then becomes the Raffle Prize for the Spring Exhibition
If you wish to take part bring a painting to the July meeting.
Members vote on which they think is the most suitable.
The Society will reimburse or pay for the cost of framing.

The painting may be any medium
Must be the original work of the artist.
Not a copy or done as part of a workshop



Members wanting hands on activities and direction in their art are encouraged to attend the two monthly paint togethers on first Thursday and the third Tuesday of each month as advertised in the newsletter calendar. Experienced members are on hand to instruct and encourage when requested.

Further opportunities for developing competency in difficult conditions is watching experienced artists solve problems during plein air days and then having a go yourself.
All one has to do is let the member who you want to watch know and pick their brains.

All members attending plein air days need to sign in and out with the day supervisor who will make themselves known. This is to avoid leaving anyone behind, group safety, and insurance for anyone hurt. Ann Warnes volunteered



Activities Diary

Exhibition Sub-committee Meeting 1st Jun 10am Wentworth Falls Country Club
Management Committee Meeting 1st Jun 2015 1pm

May Thurs 21st	MONTHLY MEETING Owen Thompson Demonstration	1.00 pm Wentworth Falls School of Arts	NO
May Thurs 28th	Plein Air Painting	Mount Tomah Botanical Gardens Meet 10am at garden	NO
June Thurs 4th	Paint Together & Morning Cuppa	10am St. Andrews Presbyterian Church Hall Falls Rd Wentworth Falls	\$5 cost
June Tues 16th	Paint Together No Oils	10am Wentworth Falls Country Club Blaxland Road Downstairs Meeting Room	Social Mem- ber ship
June Thurs 18th	MONTHLY MEETING Rachel Szalay Demonstration	1.00 pm Wentworth Falls School of Arts	NO
June Thurs 25th	Plein Air Painting Activity	Possible workshop	
July Thurs 2nd	Paint Together & Morning Cuppa	10am St. Andrews Presbyterian Church Hall Falls Rd Wentworth Falls	\$5 cost
July Thurs 16th	MONTHLY MEETING Maja Meinhof Watercolour Demonstration Jamison Award (see page 2)	1.00 pm Wentworth Falls School of Arts	NO
July Tues 21st	Paint Together No Oils	10am Wentworth Falls Country Club Blaxland Road Downstairs Meeting Room	Social Mem- ber ship
July Thurs 23rd	Mid-Year Luncheon	Secret Creek Lithgow	
Aug Thurs 6th	Paint Together & Morning Cuppa	10am St. Andrews Presbyterian Church Hall Falls Rd Wentworth Falls	\$5 cost
Aug Tues 18th	Paint Together No Oils	10am Wentworth Falls Country Club Blaxland Road Downstairs Meeting Room	Social Mem- ber ship
Aug Thurs 20th	MONTHLY MEETING John Wilson Demonstration	1.00 pm Wentworth Falls School of Arts	NO
Aug Thurs 27th	Plein Air Painting Activity	Suggestions from members about ideas ????????????????????/	
Sep Thurs 3rd	Paint Together & Morning Cuppa	10am St. Andrews Presbyterian Church Hall Falls Rd Wentworth Falls	\$5 cost
Sep 7th –11th	Holiday	Mudgee Details to be confirmed	
Sep Thurs 17th	MONTHLY MEETING Jane Canfield demonstration	1.00 pm Wentworth Falls School of Arts	NO
Oct 2nd–11th	Spring Exhibition Leura Garden Plein-air Competition	Leura Fairways	

Plein-air Painting Thursday 28th May

Mount Tomah Botanical Gardens

Meet 10am at garden

MOUNT VICTORIA TURN RIGHT ONTO DARLING CAUSWAY
TO BELL TURN RIGHT ONTO BELLS LINE ROAD
FOLLOW TO MT TOMAH GARDEN ON THE LEFT

If Not Delivered Return to
Society of Mountain Artists Inc.
PO Box 76
Wentworth Falls 2782