



# Society of Mountain Artists Inc.

Featuring the works of Artists from the Blue Mountains in New South Wales, Australia

Apr 2013

NEWSLETTER

Issue No 271

Mail P.O. Box 76 Wentworth Falls 2782—Email [secretary@mountainartists.org](mailto:secretary@mountainartists.org)  
Meetings at St Bonaventure's Church Hall Cnr. Hartley Espl & Railway Pde. Leura  
Website / Gallery [www.mountainartists.org](http://www.mountainartists.org)

### Management Committee

PRESIDENT	Vacant		ORDINARY MEMBER	Dennis West	4757 3135
VICE-PRESENT	Marie Morris	4787 1257	LIBRARIAN	Maunie Kwok	4757 3550
SECRETARY	Robyn Berglund	4782 5727	ORDINARY MEMBER	John Finnerty	4757 4324
TREASURER	Patricia Carruthers	4758 7172	ORDINARY MEMBER	Alfred Blakers	4787 5870
Assistant Treasurer	Marlene Strathdee		ORDINARY MEMBER	Vacant	

### Patron: John Wilson FRAS

Membership / Web John Finnerty 4757 4324  
Records [jf Finnerty@bigpond.com](mailto:jf Finnerty@bigpond.com)

Editor: Alfred (Fred) Blakers 4787 5870 [alfieb@eftel.net.au](mailto:alfieb@eftel.net.au)  
Articles required by 2nd Monday of month

**It is very disappointing that no member was willing to put their hand up to be President at the AGM  
I am hoping that at this meeting a member may do so.**

Below is a list of presidential duties.

- Preside as chairperson at our monthly meetings, brief members on current matters of interest.
- Act as chairperson at monthly committee meetings, preparing basic Agenda, to receive reports by treasurer, editor, exhibition committee, library, website, new members and general business.
- Act as the Society's representative at formal and informal gatherings with stakeholders and others as appropriate. Also at Society functions and exhibitions
- Strive to have all financial members involved in functions and activities including future directions of the society
- In the case of an equality of votes on questions arising from a general meeting to exercise a second casting vote
- Work closely with the management committee and secretary to ensure all decisions and action items are recorded and acted upon by the delegated members and that the minutes of meetings are a full and fair record of proceedings.
- Monitor membership and renewals to ensure that the Society supports its members eg ill health.
- Prepare an Annual Report for the AGM. Preside over the AGM until hand over to the returning officer for election of new committee
- Prepare a monthly presidents report for inclusion in the newsletter
- Act as a signatory for cheques drawn on the Society's bank account

**Please consider these points and someone come forward**

*Marie Morris Vice-president*

## May Monthly Meeting Demonstration— Ray Harrington FRAS

Starting working life as a Typographical designer in London, Ray frequented both the Tate and National Galleries where he was particularly influenced by the works of J. M. W. Turner and the French Impressionists.

He migrated to Australia in 1958 and worked in Advertising as an Art Director, eventually turning freelance and running his own Graphic Art Studio. He always dabbled in painting as well as photography, ceramics, etching and book design. When finding himself in a position to retire from the commercial scene he turned to his love of Fine Art as an outlet for his creativity. Over the last decade he has developed his own style of impressionism in oils with emphasis on light and colour. His first love is the natural landscape but paints anything he finds visually exciting. Ray is a member of the Royal Art Society of NSW and was elevated to a Fellow. He is also a member of the Society of Mountain Artists and Blackheath Art Society.

Ray received an invitation from the Australian Artist magazine to submit feature articles in 1998, 1999, 2000 and 2004 they also featured him in Master Painters of Australia in 1999. Ray has exhibited as a finalist in the Wynne and the Mosman Art Prize, has received several awards from International Artist magazine 2003 and 2004. His works are exhibited in various galleries around the mountains and feature in several corporate and many private collections around Australia and overseas. Ray shares his love of paint and painting with aspiring local artists from his studio at Mt.Irvine and runs occasional workshops.



Congratulations to Kathy Harrington for her Commended Award at the recent Blackheath Art Society exhibition

### LEARNING WORKSHOP

Wentworth Falls Country Club

Saturday 3rd August

10am till 4pm

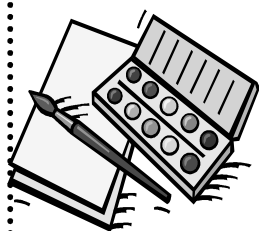
Assistance will be given in all Media except oils

Bring a painting that you are working on  
Or bring a subject that you would like to start  
Bring your own materials

**Charge \$30 full payment when booking Maximum 16 artists**

Bookings will not be refundable. If unable to come it will be your responsibility to find a replacement

Bookings at the Monthly Meetings



# Activities Diary

DATE	ACTIVITY	VENUE / CONTACT	BOOKINGS
Apr Wed 17th -Sat 20th	AUTUMN EXHIBITION	St Auburns Church Hall Megalong Street Leura See Page 6 for Parking Restrictions	
Apr Thurs 18th	<b>MONTHLY MEETING</b> Joe Cartwright Watercolour Demonstration	1.00 pm St Bonaventure's Church Hall, Cnr Railway Pde & Hartley Esp. Leura	NO
Apr Thurs 25th	Plein Air Painting	Margaret Latty's farm Hartley See page 4	NO
May Thurs 2nd	Paint Together & Morning Cuppa	10am St. Andrews Presbyterian Church Hall Falls Rd Wentworth Falls	\$5 cost
May Thurs 16th	<b>MONTHLY MEETING</b> Ray Harrington Demonstration	1.00 pm St Bonaventure's Church Hall, Cnr Railway Pde & Hartley Esp. Leura	NO
May Tues 21st	Third Tues Paint Together No Oils	10am Leura Golf Club Yearly Social Membership to Club Required	NO
May Thurs 23rd	Plein Air Painting	????????????	
June Thurs 6th	Paint Together & Morning Cuppa	10am St. Andrews Presbyterian Church Hall Falls Rd Wentworth Falls	\$5 cost
June Thurs 20th	<b>MONTHLY MEETING</b> David Newman-White Critique Session	1.00 pm St Bonaventure's Church Hall, Cnr Railway Pde & Hartley Esp. Leura	NO
June Tues 18th	Third Tues Paint Together No Oils	10am Leura Golf Club Yearly Social Membership to Club Required	NO
??	Mid-year Luncheon	????????????	??
June Thurs 27th	Plein Air Painting	????????????	??
July Tues 4th	Paint Together & Morning Cuppa	10am St. Andrews Presbyterian Church Hall Falls Rd Wentworth Falls	\$5 cost
July Thurs 18th	<b>MONTHLY MEETING</b> Dennis West Demonstration Voting for the Jamison Award	Bring a painting Jamison Acquisition Award by peer voting Painting becomes Raffle prize Spring Exhibition	NO
Aug Sat 3rd	Learning Workshop Help with all media except oils	Wentworth Falls Country Club 10 til 4pm See Page 2 for Details	Yes
Sep Thurs 19th	<b>MONTHLY MEETING</b> Jody Graham Demonstration	1.00 pm St Bonaventure's Church Hall, Cnr Railway Pde & Hartley Esp. Leura	NO
Sept	ANNUAL HOLIDAY	????????????	??
Oct	Spring Exhibition	Leura Fairways	
Oct	Activities	????????????	??
Nov	Christmas Luncheon + Activities	????????????	??

**NOTICE THE EMPTY SPACES SEE PAGE 5 FOR THE REASONS**

*Welcome to our new Members*

Carole Arratoon, Wentworth Falls  
Lois Stovold, Blackheath  
Dymphna Dean, Springwood  
Christine Caton, Wentworth Falls  
Carmel Ruth Pujic, Wentworth Falls



*Exhibitions*

SMA Member **Helen Hudson**  
**3rd May—30 June**

*Gallery Blackheath*

44 Govetts Leap Road Blackheath  
10am—5pm Fri. Sat. Sun and public holidays

*Blue Mountain Artists Network*

Exhibition (Includes some SMA members)

*“Autumn at the Edge”*

Edge Cinema Complex Katoomba  
Open every day 9am til late at night until End of May

**Plein-air Painting Thursday 25th April**

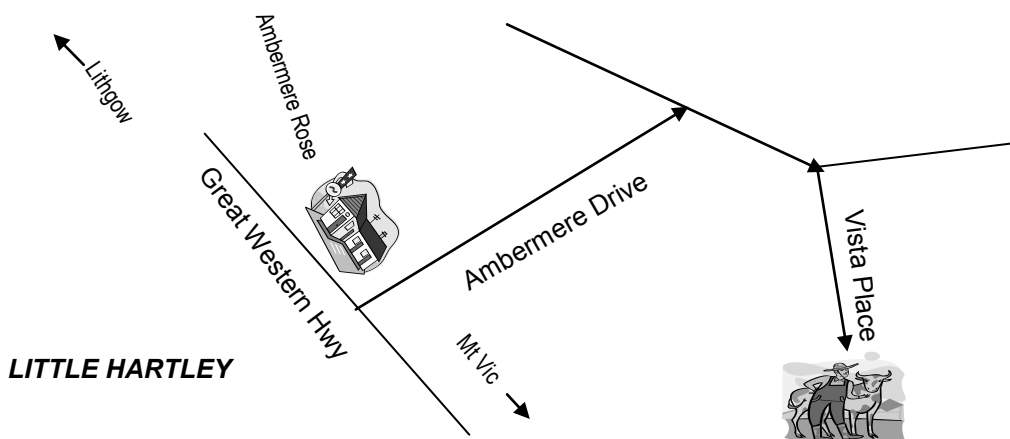
**10am**

**Margaret Latty’s Farm 16 Vista Place Little Hartley**

First turn to the right from Great Western highway into Ambermere Drive  
Follow to Tee intersection turn right then to Vista Place on the right Margaret’s farm is at the dead end

**This is always a great social day. Bring morning tea and lunch.**

Partners are very welcome. Sit under the trees and relax.



**ANNUAL GENERAL MEETING**

Management Committee Election

President NO NOMINATIONS Vice-president Marie Morris  
Treasurer NO NOMINATIONS Secretary Robyn Berglund

Five Ordinary Members Dennis West Maunie Kwok Pat Carruthers  
John Finnerty Fred Blakers

The Management Committee may fill the empty positions as Casual Vacancies

A poor response all the usual work horses (who are becoming worn out) again came forward. If members wish to keep the many varied and enjoyable activities for which the Society has been known some other members are going to help share the load.

**Management Committee held a meeting at which the following was decided.**

Pat Carruthers generously offered to take on the role as **Treasurer** And was appointed  
This **leaves a vacancy as an Ordinary Member**  
Marlene Strathdee has offered and was appointed as Assistant treasurer to help Pat.

Appointed **EXHIBITION** Sub-committee Dennis West, Anna Marshall, Marie Morris, Fred Blakers, Stephanie Wilkinson, Maunie Kwok and John Finnerty

Appointed **LIBRARY** : : Maunie Kwok and Valerie Craven. Dixie Wilmott volunteered to assist when required

Appointed **WEBSITE**: John Finnerty, Heather Skarratt, Marg Beal, Fred Blakers, and Robyn Berglund.

Again all existing sub-committe members only two new members put up their hands to help.

**If you notice many vacancies and question marks on the Activities Diary well this may be the way of the future  
There must be some members who are not able to join a committee but could help with organising an activity  
as a once off or short term committment**

***EXPRESSION OF INTEREST.***

***President***

***Name .....***

***Ordinary Committee Member***

***Name .....***



***I would like to help to organise a one off activity to keep these continuing***

**Leura Garden Festival Exhibition ... ..**

**Great Train Weekend Exhibition .....**

**Mid-Year Luncheon .....**

**Christmas Luncheon .....**

**Annual Holiday.....**

**Gallery Trips (eg Canberra).....**

**Plein-air Painting Days.....**

## Autumn Art Exhibition Parking

We are fortunate to be able to Hire the St Auburns Hall for the Autumn Exhibition.  
As it is in the main business area of Leura which is a great asset.



The Church Committee does have conditions about car parking.

There is **NO PARKING IN THE CHURCH GROUNDS FOR DROP OFF OR PICKUP OF PAINTINGS**

There is ample parking in council parking area opposite or in the street

Members on duty may park at the rear of the Hall but **NO ONE ELSE**

If Not Delivered Return to  
Society of Mountain Artists Inc.  
PO Box 76  
Wentworth Falls 2782