

Society of Mountain Artists Inc.

SILVER ANNIVERSARY



1986 ~ 2011

June 2011

NEWSLETTER

Issue No 251

Mail P.O. Box 76 Wentworth Falls 2782—Email societyofmountainartists@hotmail.com
 Meetings at St Bonaventure's Church Hall Cnr. Hartley Espl & Railway Pde. Leura

Patron: John Wilson FRAS

Management Committee

PRESIDENT Peter Ayres 4758 9005
 VICE-PRESIDENT Dennis West 4757 3135
 SECRETARY Patricia Carruthers 4758 7172
 TREASURER Ron Anderson 4757 2423

ORDINARY MEMBER Nancy Dodd 4757 1535
 ORDINARY MEMBER Maunie Kwok 4757 3550
 ORDINARY MEMBER Anna Marshall 4784 1148
 ORDINARY MEMBER Marie Morris 4787 1257
 ORDINARY MEMBER Kath Milowski

Membership Records John Finnerty 4757 4324
jfynnerty@bigpond.com

Editor: Alfred (Fred) Blakers 4787 5870 afieb@eftel.net.au
 Articles required by 2nd Monday of month

President's Report

The proposed mid-year luncheon scheduled for 30th June will now be held at the Wentworth Falls Country Club off Blaxland Road at a cost of \$25 per head. [see Page 2 for more details]

Numbers indicated to date were insufficient to meet the requirements of the Fairmont and the website development while well advanced, is incomplete. It is proposed to hold the 25 anniversary celebration and website launch later in the year when we can also have an early Christmas lunch.

The Plein Air painters enjoyed a cool but beautiful autumn morning painting in Megalong Valley and a welcome warm lunch afterwards marking the end of our outdoor sessions until Spring comes. In their place the monthly excursions to the city will recommence on the 3rd Thursday of each month, beginning 23 June. These are intended principally as a social day out but attendees can do their own thing if they wish—more details in the Diary.

Plein Air painters also joined together in a small exhibition at Mount Victoria as part of the Great Train Weekend recently. Thanks to Marie Morris for her initiative in getting this underway and to those whose help made it possible, including the proprietors and staff of the Victoria and Albert Guesthouse.

Sales of both framed and unframed work were very good and many visitors praised the high standard of the exhibition. We met a number of potential new members so all in all it was a very successful event.

Fred Blakers has put a lot of work into redrafting and updating our rules and constitution to meet new legislative changes. Many of you will have seen the draft at our last meeting and perhaps taken a hard copy to study. Please note that for this revised document to be accepted by the members a special meeting will precede the next ordinary monthly meeting in July. It is important that if you have any comments you make them at the June meeting.

I will be away for two months until the September meeting so Vice President Dennis West will be acting during that period. Please give him your support in ensuring that the Society continues to develop and flourish.

Peter Ayres

New Name badges to be collected
 Barbara Boyle
 John Falcon
 Henry Jesuadian

July Demonstration.—David Newman-White — Portraiture

Born 1952, Nowra New South Wales, Australia. Fine Artist and painter of the human form and portraiture. The two art disciplines I currently work with are painting and drawing. Oil paint on canvas is my preferred medium and I sketch with a variety of drawing media, charcoal, conte crayon and pastel. My inspiration for subject matter for the past few years has been based on the human form in relation to architecture. I have had a fascination with merging the two on paper and canvas using the contrasts between organic human form and geometric nature of architecture. Residing in Lithgow NSW Website www.newmanwhite.com.au

Exhibition Calendar-notes for your diary

National Trust SH Ervin gallery .Observatory Hill

Salon Des Refuses the alternative Archibald and Wynne prize selection. 16 April until 19 June

The Promised Land- The art of Lawrence Daws.[landscapes] 24 June until 7 August

Museum of Contemporary Art, Circular Quay.

Michael Stevenson installations. 6 April until 19 June

State Library of NSW, Macquarie St.

Moran prizes for Portraiture and Photography . Opens 21 April until 26 June

ART GALLERY OF NSW

Archibald ,Wynne and Sulman prizes opens 16 April until 26 June

The Poetry of Drawing; Pre Raphaelite designs, drawings and watercolours .Opens 18 June until 4 Sept.

David Aspen ;The colours of music and place. Opens 28 July until 4 September

Kaldor Collection of contemporary art-permanent exhibition in new basement galleries

THE SCULPTORS SOCIETY

-Darling Park cnr of Market and 301 Sussex St. form August 1 until 3 Sept. 8am-6pm Mon to Friday

SHIPLEY GALLERY Blackheath.

June 2011 art show ;Ray Harrington, Ces Jorgensen et al opens 2pm 11 June

NATIONAL GALLERY OF VICTORIA

Eugene von Guerard 'Nature Revealed' Starts 16 April til 7 August
Vienna; Art and Design [Klimp, Schiele, Hoffman, Loos]
18th June until 9 October

Kaleidoscope-Art and Colour until 5 February 2012

NATIONAL GALLERY Canberra

Out of the West; Art of WA from the national collection.

Starts 8 July until 1 April

Fred Williams Art and Colour .a major retrospective opens 12 August until 6 Nov 2011

ART GALLERY OF QUEENSLAND, Brisbane.

Art ,love and life; Ethel Carrick and E Phillips Fox til 7 August

GALLERY OF MODERN ART, Brisbane

Surrealism-The Poetry of Dreams [from Paris]

11 June until 2 October

Coming up; Matisse Drawings and Prints and Masterpieces from the Prado in Spain

Plein-air Painters Exhibition Mount Victoria

This was so successful that we plan to make it an Annual Event.

A good incentive to come to Plein-air Anyone who attends three Plein-air days will be able to exhibit.

Eleven Paintings sold. Eight enquiries to join the Society. A success in anyone's language. Many thanks to Marie Morris who come up with the idea. Also to the small band of helpers.

The free hot chocolate on the veranda was great



Mid-Year Luncheon

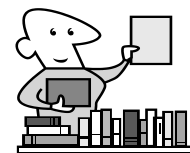
11.30 for 12noon

Wentworth falls Country Club

Roast Pork Battered Fish
Vegetables Sticky Date Pudding Apple Crumble
Drinks from Bar

Price \$25 payable before hand preferably at June Meeting


Booking required Nancy Dodd 4757 1535



LIBRARY

Still some Videos available \$5 each.
Books & art items belonging to the late Robert Seach and late Mavis Taylor will be offered for sale at the June monthly Meeting

Activities Diary

DATE	ACTIVITY	VENUE / CONTACT	BOOKINGS
June Thurs 16th	MONTHLY MEETING Joe Penn FRAS Drawing Demonstration View proposed Changes to our Constitution	1.00 pm St Bonaventure's Church Hall, Cnr Railway Pde & Hartley Esp. Leura	NO
June Thurs 23rd	Plein Air Painting, Sketching, Photographing	Rocks Area Sydney 8 am Train from Mt Victoria Second Last Carriage	NO
June Thurs 30th	CHANGE Mid-Year Luncheon New Venue	CHANGE 11.30 for 12noon Wentworth falls Country Club	YES by June meeting See details page 2
July 4	Management Committee		
July Thurs 21st	Website On-line Gallery Gathering ~~~~~ Special General Meeting Vote to adopt new Constitution Monthly Meeting David Newman-White Portraiture Demonstration	11.45am to 12.45 pm <u>Discuss the latest developments, join the gallery</u> 1.00 pm St Bonaventure's Church Hall, Cnr Railway Pde & Hartley Esp. Leura	See Page 4 ~~~~~ NO
July 28	Plein Air Activity	Location to be Advised	NO
Aug 1st	Management Committee		
Aug Thurs 18th	MONTHLY MEETING Jamison Award (Members' Choice)	1.00 pm St Bonaventure's Church Hall, Cnr Railway Pde & Hartley Esp. Leura Bring a painting and a small plate of food to share	NO What is Jamison Award? See page 4
Aug 25th	Plein Air Activity	Location to be Advised	NO
Aug 29	Management Committee		
Sept Mon 5th- Fri 9th	Annual Painting Holiday	Kiama Surf Beach Holiday Park www.kiamacoast.com.au/Surf_Beach	YES With Deposit See Page 4
Sept Thurs 15th	MONTHLY MEETING Robyn Collier Oil Demonstration	1.00 pm St Bonaventure's Church Hall, Cnr Railway Pde & Hartley Esp. Leura	NO
Sept 22nd	Plein Air Painting	Location to be Advised	NO
Sep 26	Management Committee		
Sept Fri 30th	Official Opening & Awards Presentation of Spring Art Exhibition	7 for 7.30pm Leura Fairways 19-21 Fitzroy St Leura Drinks/ refreshments	NO
Oct Sat 1st- Sun 9th	Spring Art Exhibition & Plein Air Painting in the Leura Festival Gardens	Leura Fairways 19-21 Fitzroy St Leura Details to be Advised	NO
Oct 20th	MONTHLY MEETING	1.00 pm St Bonaventure's Church Hall,	NO
Oct 27th	Plein Air Painting	Location to be Advised	NO
Nov	Christmas, 25 Anniversary, Official Website Launch	Luncheon Details to be confirmed	
Nov 7	Management Committee		
Nov Thurs 17th	MONTHLY MEETING Christmas Afternoon Tea	1.00 pm St Bonaventure's Church Hall, Cnr Railway Pde & Hartley Esp. Leura	NO
Jan 19th 2012	Annual Picnic Starting the New Year	Location to be Advised	NO



WEBSITE DEVELOPMENT

The last meeting of interested members produced some valuable feedback and comments.

So we plan to have another 11.45 until 12.45 before the July Monthly Meeting

You will be able to see further improvements that have been made.

It has been decided to change to a 'Purchase Enquiry' system for sales on the On-line Gallery.

This does require a small extra amount of work but simplifies the commission and sales process.

This will be explained at the July meeting

Some offers have been made by members who are willing to help photograph other member's paintings.

So if you need assistance come along to the July Meeting at 11.45.

It has also been decided to waiver the \$20 yearly joining fee for **2012** for any members who join the Gallery before the end of **December this year.**

EARLY NOTICE TO HELP PREPARE For our Annual *SPRING EXHIBITION*

Applications & Full Conditions will be in the August Newsletter

Closing date for entries will be Friday 16th September

Painting Sizes

Large 330cm (or 130ins) Perimeter

Small 254cm (or 100ins) Perimeter

Maximum number of entries will be 4

1 larger plus 3 smaller size paintings

OR 4 smaller size paintings

No More Than Two (2) in any Category

CATEGORIES

1. **Oil or Acrylic** on any support
2. **Watercolour** Includes Gouache (no Pen work)
3. **Works on Paper** Pastel / Pen / Pencil / Mixed Media / Hand Pulled Prints
4. **Small Paintings** Up to 50" (127cm) outside dimensions (Perimeter) any Medium
5. **Contemporary** Non-traditional, Innovative and New Techniques any Medium No Computer or Photographic Imaging

The Jamison Award

The Jamison Award was a regular feature in the early days of the Society. As part of our 20th Anniversary celebrations it was reintroduced. It is an acquisitive award judged by members' vote. The painting becomes the raffle prize for the Spring Exhibition.

The beautiful calligraphy and hand coloured ornamentation on the certificate was designed by Keith Sherlock (our first elected president) for presentation to the winner

It also features a reproduction of a lino-cut print of a mountain scene by Peter Dodd.

Winners since re-introduction

2006 Marie Morris

2007 Judith Adam

2008 Pam Johnson

2009 Judith Adam

2010 Anna Marshall

Bring along a painting that you would like to be considered for selection to the August Monthly meeting.

Annual Painting Holiday

Sept Mon 5th- Fri 9th

Kiama Surf Beach Holiday Park

www.kiamacoast.com.au/Surf_Beach



Surf Beach Holiday Park, offers a variety of accommodation choices from our powered tent and caravan sites and luxury cabins, through to the superior Penguin Palace. Guests can enjoy fishing and surfing, the Parks' resort style swimming pools, games room and the fully equipped camp kitchen. Kiama's abundance of gourmet cafés & restaurants and quaint boutique shops are all within easy walking distance.

- A minimum of the non-refundable deposit (\$100 for on-site accommodation,) is required at the time of booking, .
- The balance MUST be paid on arrival for ALL bookings
- All major credit cards (except Diners) cash and Eftpos accepted
- The use of American Express cards will attract a 2.5% fee
- Refunds will only be issued (excluding the non-refundable deposit) if a reservation is cancelled at least 14 days prior to arrival during low season via written notice

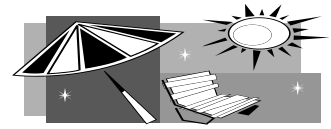
The price will depend on how many are in each cabin. There are 1, 4, 6 and 7 people cabins. All 2 bed rooms, 1 double bed and combination of single & bunk beds.

Costs per night per cabin approx

\$155 1 bed, others \$135 to \$145 and \$160 for a spa

So start working out with whom you may be able to share.

Indicate on Lists on table for June & July Meetings
Full deposits must be paid to confirm bookings
by end of July



Kiama Holiday Local Attractions

Welcome to the Kiama Coast – where the mountains meet the sea! Here, you'll find some of the most spectacular coastal scenery in Australia – dramatic rock formations and stunning beaches. Whether you're looking for fantastic surfing conditions or long golden beaches, fishing and boating opportunities, Minnamurra Rain Forest, forest walks and fun parks or historic villages – the Kiama Coast has it all. And, its just 90 minutes from Sydney!

**Notice Special General Meeting
to be held at 1pm on Thursday 21st July.**

Meeting business to vote to

**“Adopt a new Constitution in accordance
with the Associations Incorporation Act
as Amended 2009 and Regulations 2010.”**

The Associations Incorporation Act has been amended and we are required to amend our Rules (now Constitution) to comply with the new Act.

We have decided to adopt the Model provided by Fair Trading with some minor alterations particular to the SMA and two clauses required by Aust Taxation Office.

Adoption requires a vote by members.

Copies of Proposed Constitution will be available for members to peruse at the June Meeting or by contacting me alfieb@eftel.net.au

Fred Blakers. Public Officer

If Not Delivered Return to
Society of Mountain Artists Inc.
PO Box 76
Wentworth Falls 2782